

The logo for 'ideal' is displayed in white lowercase letters within a dark blue rounded rectangular box. The background of the slide features a panoramic view of a city skyline with various skyscrapers and a bridge, set against a clear blue sky.

ideal

# Re-Entry & Infection Prevention

Healthy Building Strategies

Jaclyn Carpenter

CEO

May 13, 2020

# Re-Entering your Workspace

- **Employee and visitor screening**
  - Visitor screening service
  - Temperature screening
- **Janitorial**
  - Preventative, reactive and disinfecting cleaning
  - Enhanced standards
- **Building and office operations**
  - Building readiness evaluation
  - Safety, compliance, risk assessment
  - Continuity plan
- **Food and beverage**
  - Food service adjustments

# Re-Entering your Workspace

- **Employee health & wellness**
  - Welcome back kit
  - New workstyle support
- **Delivery services**
  - Amended mail service
  - Package delivery adjustments
  - Food delivery adjustments
- **Space guidelines and adjustments**
  - Re-entry strategy & implementation plan
  - Social distancing occupancy strategy and enablement
  - Workplace foot traffic management and way finding
  - Flexible space risk advisory
  - Workspace, meeting and collaboration space management

# Your Team & Their Protection

- Who's on your team?



# Your Team & Their Protection



- PPE (Personal Protective Equipment)
  - **Secure PPE supplies**
    - 1-2 masks per week, per person
    - 1-5 pairs gloves per day, per person
  - Train them on **donning and doffing**
    - OSHA, CDC
- **Awareness training**
  - By Certified Industrial Hygienist
- **8 Steps of Handwashing**

# Hand Hygiene



# 8 Steps of Handwashing

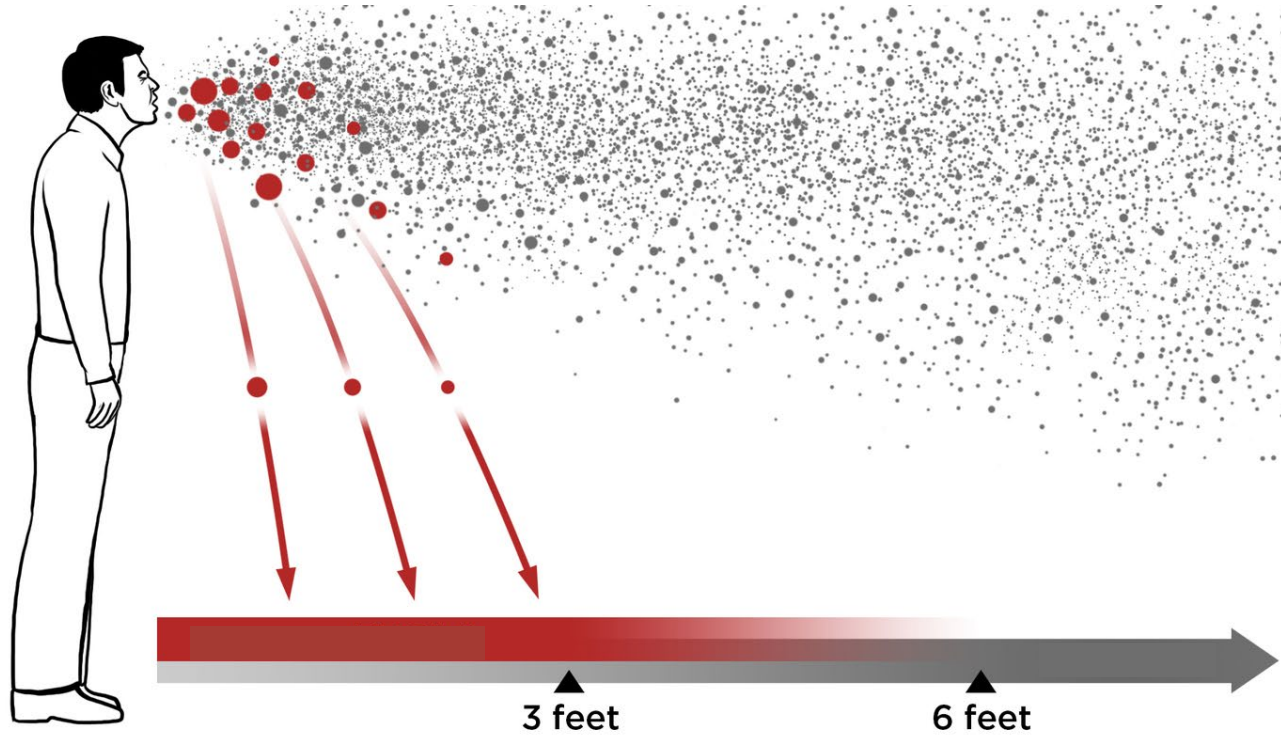




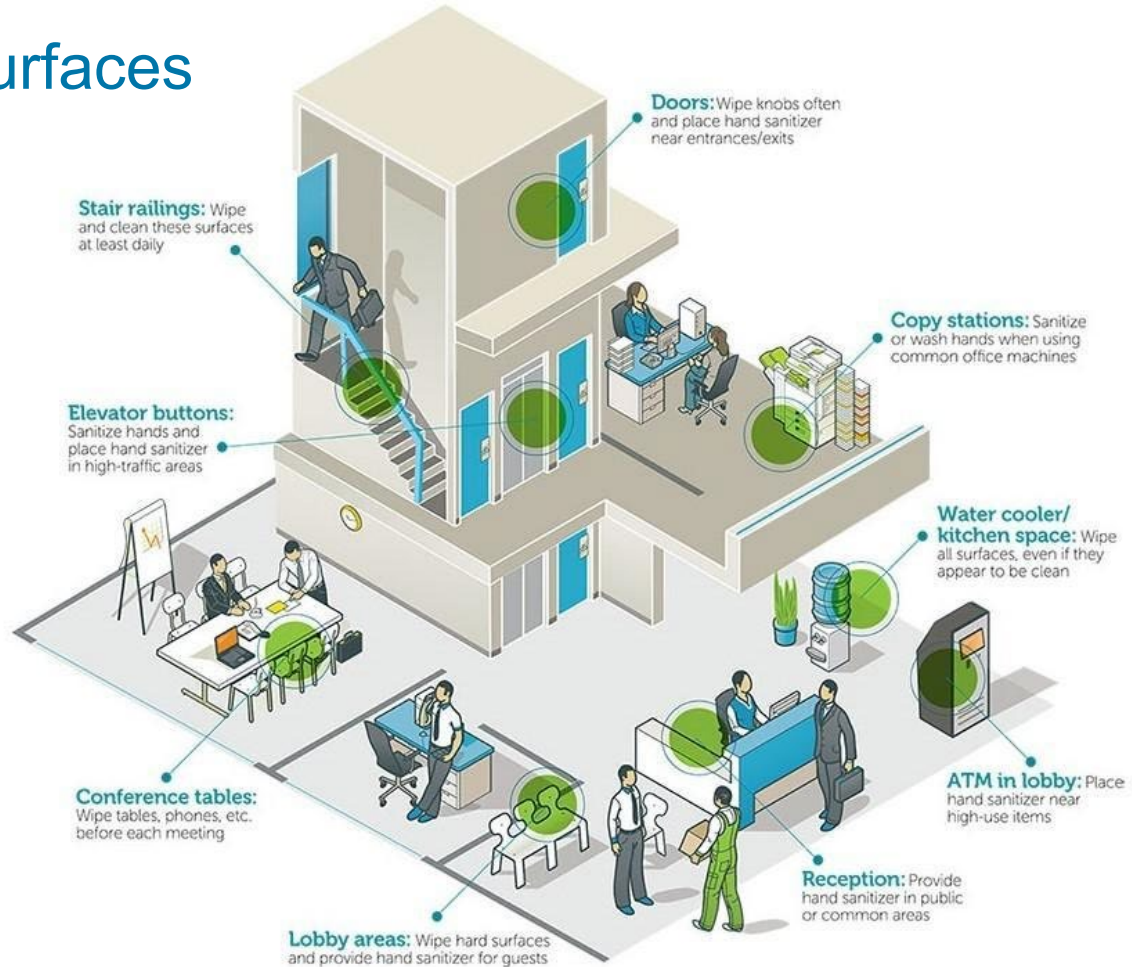
## SARS-CoV-2 in the Workplace



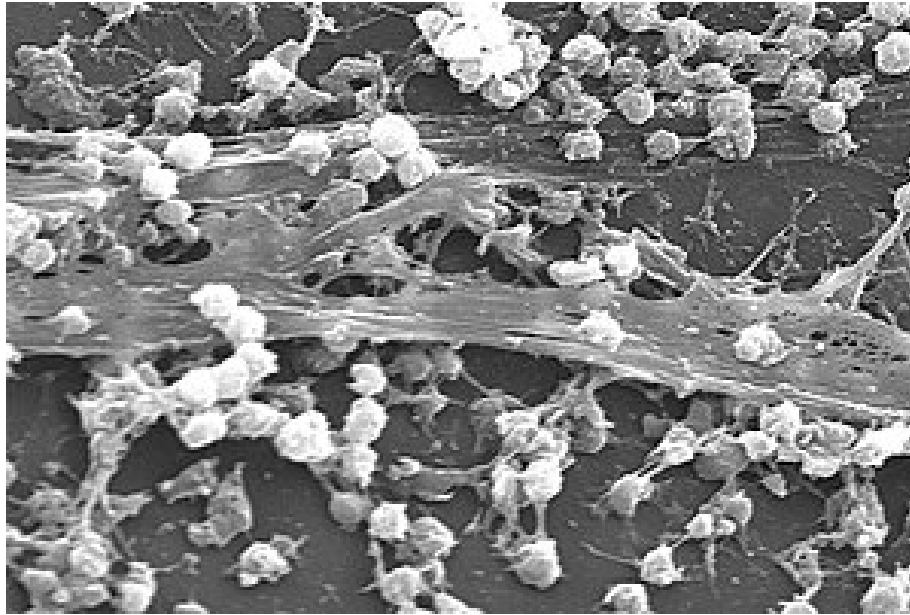
# Shedding the Virus:

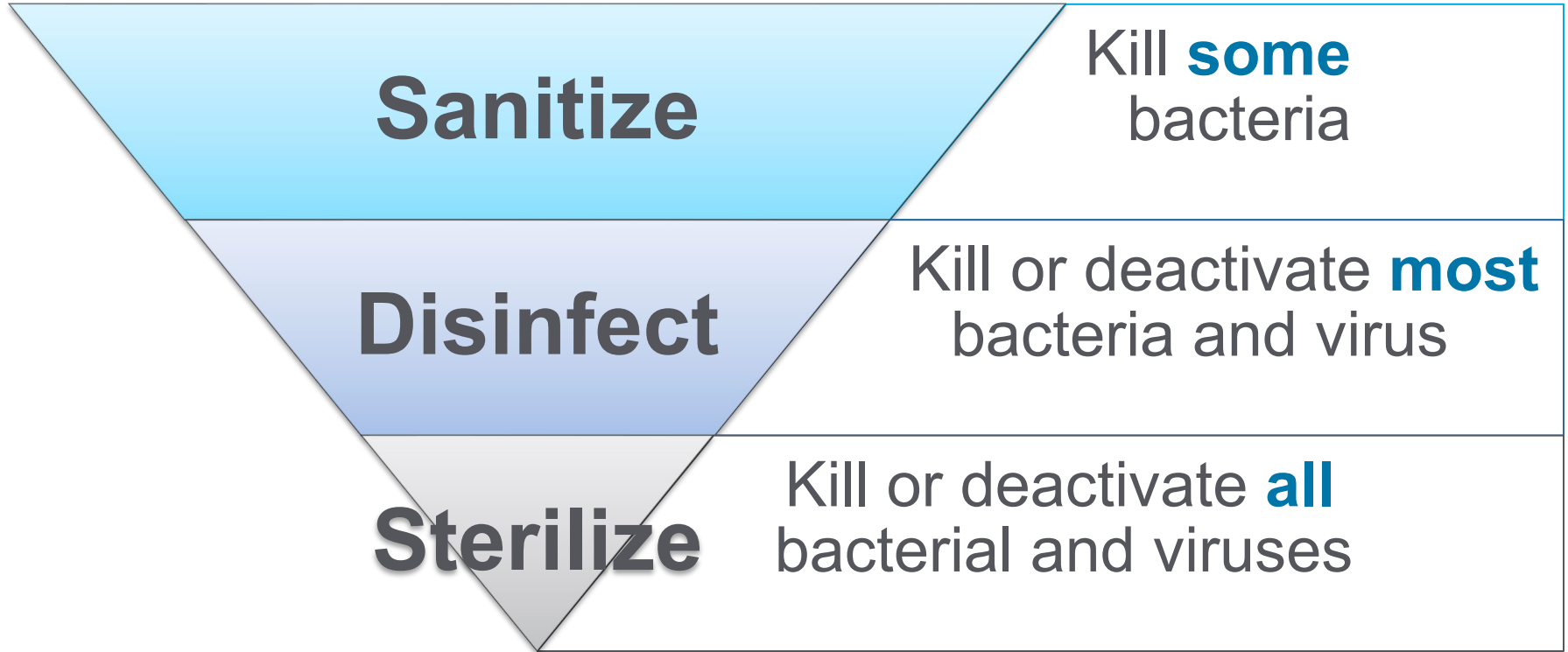


# High Touch Surfaces

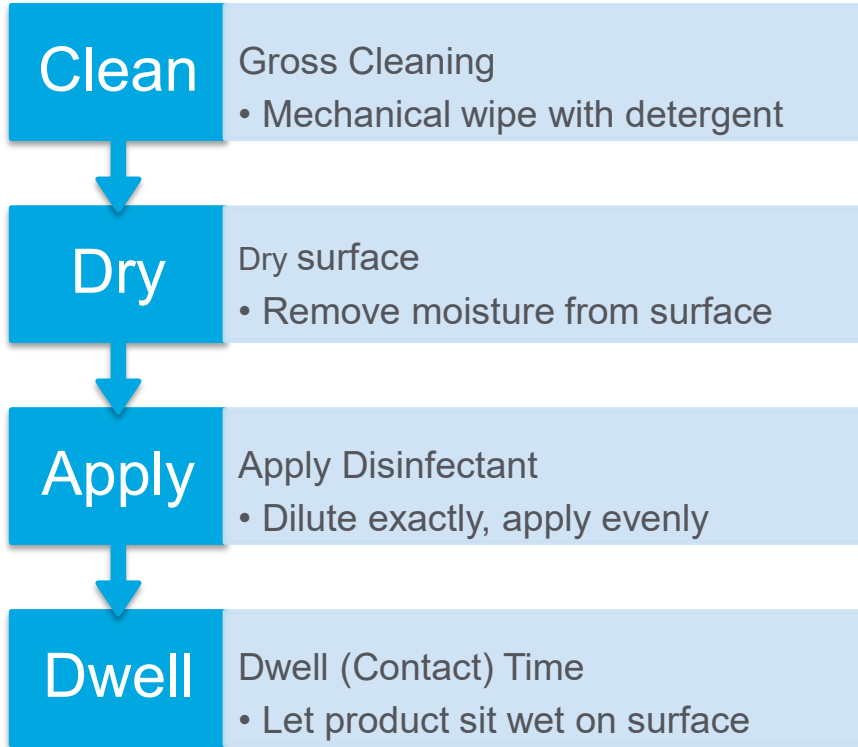


# Biofilm shields SARS-CoV-2





# Basic Disinfecting Process

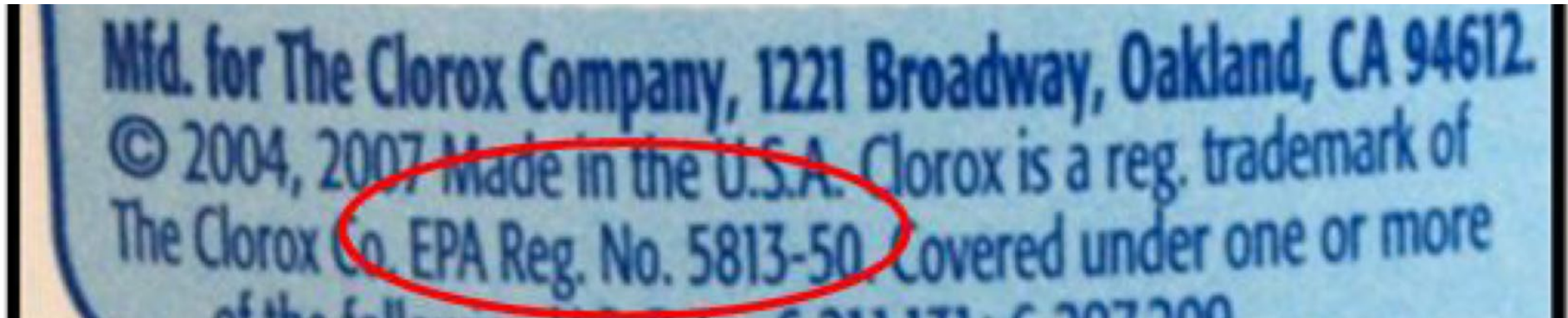
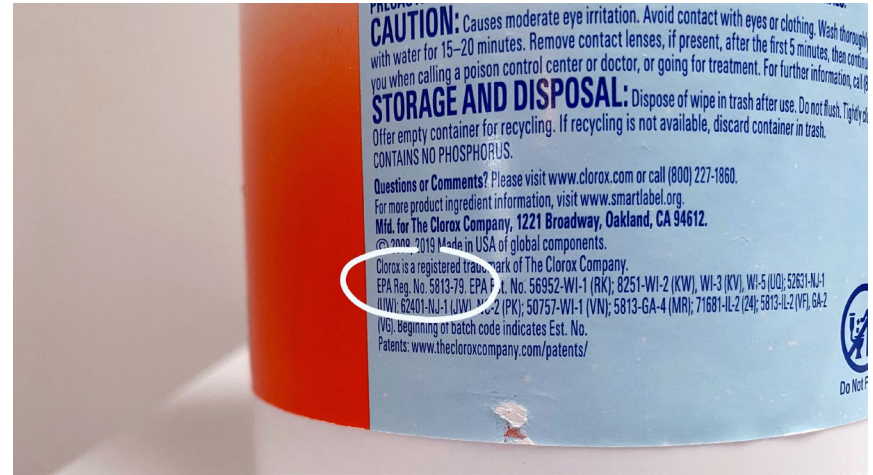


# Disinfectant Selection













- EPA's "Emerging Pathogen: List N"
- Master Label
- Choose lowest dwell time
- Dilute v. RTU
- Review SDS

# Finding Dwell Time or Contact Time



# EPA - List N

List N: Products with Emerging Viral Pathogens AND Human Coronavirus claims for use against SARS-CoV-2

 EPA Registration Number 	 Active Ingredient(s)	 Product Name	 Company	 Follow the disinfection directions and preparation for the following virus 	 Contact Time (in minutes 	 Formulation Type 	 Surface Types for Use 	 Use Site 	 Emerging Viral Pathogen Claim? 	 Date Added to List N
<input type="text" value="Search"/>	<input type="text" value="Search"/>	<input type="text" value="Search"/>	<input type="text" value="Search"/>	<input type="text" value="Search"/>	<input type="text" value="Search"/>	<input type="text" value="Search"/>	<input type="text" value="Search"/>	<input type="text" value="Search"/>	<input type="text" value="Search"/>	<input type="text" value="Search"/>
71700-2	Chlorine dioxide; Quaternary ammonium	SNIPER	Global Environmental Restoration Inc	Canine parvovirus	10	RTU	Hard nonporous	Healthcare; Institutional; Residential	Yes	04/09/2020



**ULTRA CLOROX® BRAND REGULAR BLEACH (EPA Reg. No. 5813-50)**

**[REGISTERED AS (Insert Registered Alternate Brand Name)]**

**VIRUCIDALS EFFICACY**

**It is a violation of Federal law to use this product in a manner inconsistent with its labeling.**

§This product, when used as directed below, is effective against the following viruses on hard, nonporous, inanimate surfaces:

*Adenovirus Type 2*

*Avian Influenza [virus] Type A [ATCC VR-2072]‡*

*Hepatitis [type] A Virus [ATCC VR-2093] [strain HM-175]*

*Human Immunodeficiency virus Type 1 (HIV-1) [RF strain]‡*

*Respiratory Syncytial Virus [ATCC VR-26] [Strain Long]*

*[Strain G] Herpes Simplex Virus [Type] 2 (Herpes) [ATCC VR-734]  
[Strain G]*

*Rubella virus [ATCC VR-315]*

*Feline parvovirus [ATCC 648]<sup>20</sup>*

*Rotavirus [Strain WA] [ATCC VR-2018]*

*Cytomegalovirus [ATCC VR-578] [Strain AD-169]*

*Influenza A2 Virus (Hong Kong) [VR-544]*

*Varicella zoster virus [ATCC VR-586]*

*Rhinovirus Type 17*

*Canine parvovirus [ATCC 953]<sup>20</sup>*

*Human Coronavirus [ATCC VR-740]*

**Directions for Use:**

**Hard, Nonporous Surfaces:**

**To disinfect hard, nonporous surfaces:** [First] Clean surface by removing gross filth (loose dirt, debris, food materials, etc.). Prepare a 2700 ppm available chlorine solution. Thoroughly wet surface with the solution and allow it to remain in contact with the surface for 5 minutes. Rinse with clean water and dry.

‡See directions in the Clorox Service Bulletin entitled "Special Instructions for Using Ultra Clorox® Brand Regular Bleach to Clean and Decontaminate Against HIV on Surfaces/Objects Soiled with Blood/Body Fluids".

<sup>20</sup>For Canine and Feline parvovirus, use the same instructions as above but keep the solution in contact with the surface for 10 minutes.

## Common Disinfecting Mistakes

- Trying to disinfect a **dirty surface**
- **“Eyeballing”** dilution ratios
- Failing to reach  **dwell time** (contact time)
- Not knowing the **shelf-life** of the disinfectant
- **Topping off** diluted disinfectant bottles
- **Mixing** cleaning chemicals
- Contaminating new areas with **dirty rag**
- Lack of **training & understanding**



# Pollution Liability Insurance



Anyone providing disinfecting services **must have** Pollution Liability Insurance



Each policy has **different definitions** of a "pollutant"



Verify **no exclusion** for virus or communicable disease

# Plan for an Outbreak



# In-house Team v. Outsourced Specialists

Who is cleaning for:

1. Daily or weekly cleaning
2. Confirmed case

**Decide now**, so you can move forward with the plan.

Consider costs, staff exposure, staff time, risk and liability



# Before you have an outbreak:



- Choose your specialty cleaning contractor
  - **Walk building(s)** before outbreak
- Administrative logistics
  - Pre-approved **pricing**
  - **Insurance** requirements met
  - Sign **contracts** before
- Drill with your team (fire drill)
  - Identifying **path of travel**
  - Isolating these area
  - **Decision:** inhouse or outsource cleaning?

## Everyone is an Epidemiologist or Environmental Disinfecting Expert Overnight

- Beware the door to door imposters selling everything from testing to disinfecting
- Beware of those who advertise using the words testing, sanitize, sterilize, eradicate
- Disinfecting can only guarantee a “moment in time”
- You can “wait out” the virus



